

BONZAI



PULSE

SHOWERSPAS

Bonzai Shower System

Model #1017-B & 1017-S

Owner's Manual



1011-Parts Legend

1. ½" x 2½" NPT Nipple
2. PTFE (plumber's) Tape
3. Chrome 90° w/ Cone Washer
4. Tapered Plastic Washer
5. Chrome Finned Nut
6. Escutcheon Base
7. Escutcheon Cover
8. Thin Escutcheon (Optional)
9. Supply Line

10. 2.5 GPM Flow Restrictor
11. Screened Rubber Washer
12. 90° Inlet
13. Mount(2)
14. Mounting Screw(2)
15. Metal Washer(2)
16. Nylon Anchor.....(2)
17. #4 x 1/2" Screw(8)
18. Cover Plate.....(2)

19. Hand Shower
20. Hand Shower Holder
21. Hand Shower Hose
22. 4mm Rubber Washer(2)
23. Showerhead
24. 6mm Rubber Washer
25. Shelf

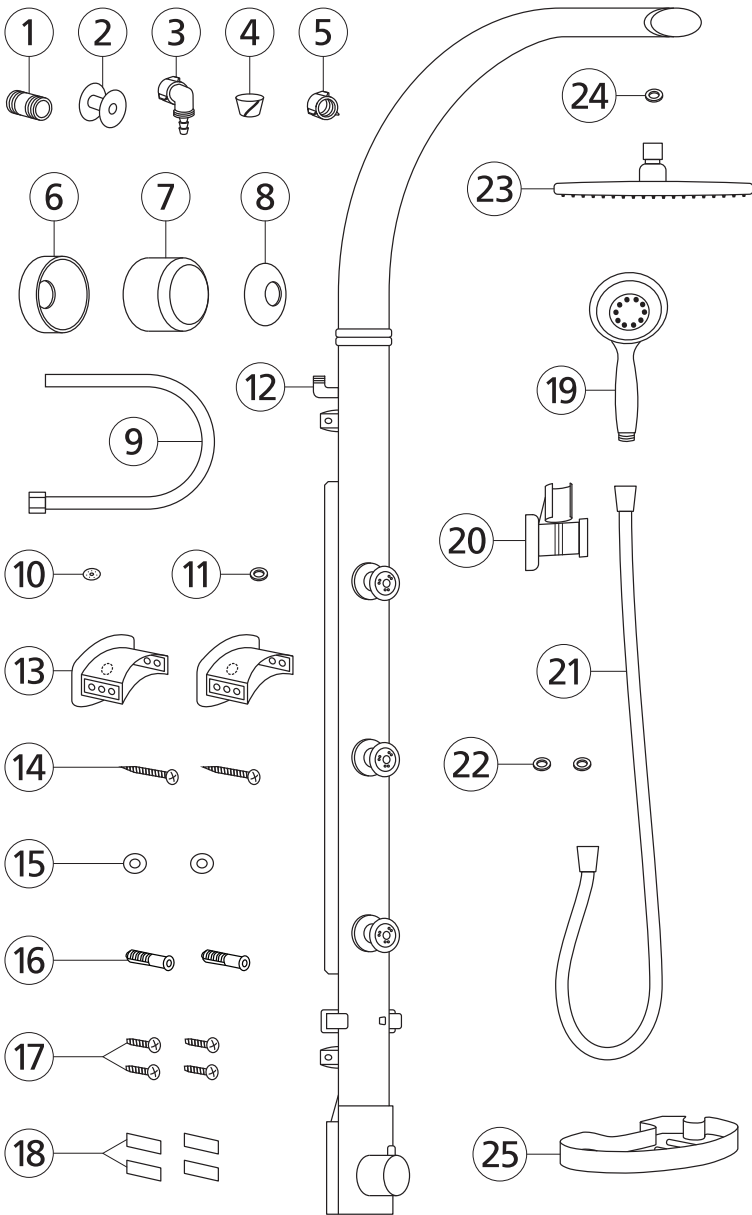


Figure A

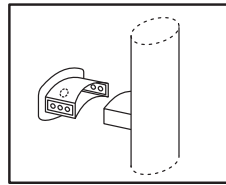


Figure B

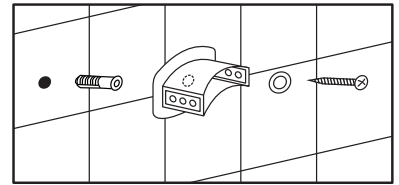


Figure C

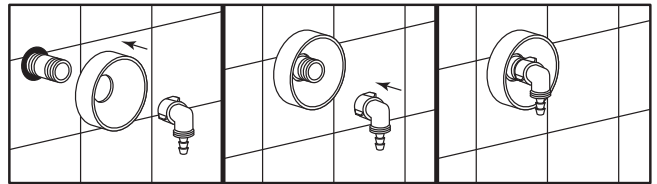


Figure D

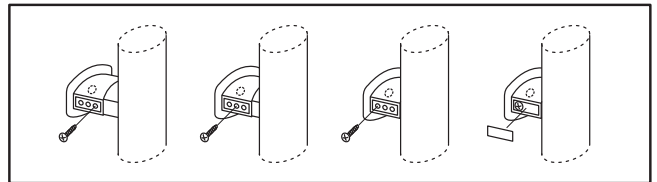
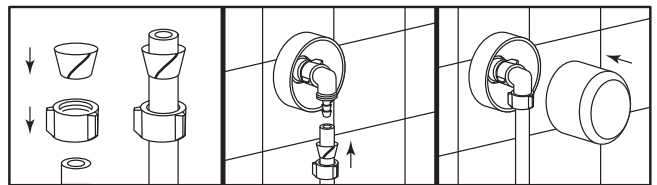


Figure E



Installation

Thank you for choosing the Bonzai Shower System by PULSE ShowerSpas!

Assembly and installation of the Bonzai Shower System is designed to be quick and easy. If you have installation questions or performance problems, call PULSE Customer Service toll free at 888-785-7320 or visit www.pulseshower spas.com.

Please read instructions carefully, become familiar with all parts, installation procedures and tools required. Follow the steps in the order presented to help avoid any mistakes.

FOR NEW CONSTRUCTION OR COMPLETE REMODEL

- A hot/cold mixing valve is required (NOT INCLUDED)
- Nipple should extend ½" past finished wall surface

FOR FIBERGLASS ENCLOSURES

IMPORTANT: PULSE does not recommend mounting through fiberglass wall surfaces without adequate wood or sheetrock backing! If mounting Bonzai to a fiberglass wall you must purchase appropriate mounting hardware (sold separately).

TOOLS REQUIRED

Phillips screwdriver, adjustable wrench, level, pencil or marker, drill, ¼" masonry/tile drill bit, hammer

INSTALLATION

For a helpful installation video go to:

www.pulseshower spas.com/flash/bonzai_installation.html

1. Remove your showerhead and escutcheon (trim cover) from your existing shower arm. Leave shower arm in place.
 2. Determine the length of brass NPT nipple (1) needed:
 - a. Place mark on existing shower arm at wall surface. Unscrew shower arm from elbow in wall.
 - b. Measure distance from mark on shower arm to end of shower arm threads. Add ½" to this measurement, and then round to nearest ½".
Example 1: If measurement = 1¼", add ½" = 1¾", rounded = 2" NPT nipple—this is the length needed.
Example 2: If measurement = 1⅝", add ½" = 2⅛", rounded = 2" NPT nipple—this is the length needed.
- IMPORTANT:** If your shower arm is located in wall above tile/fiberglass surface you must add the distance from the wall to face of tile/fiberglass surface to the above measurement.
- NOTE:** If supplied 2½" nipple (1) is not the correct length based on above formula, you must obtain the correct size NPT brass nipple (sold separately), available at most hardware stores.
3. Apply a generous amount of PTFE (plumber's) tape (2) to both ends of the nipple (1).
 4. Insert flow restrictor (10), then screened rubber washer (11) into hexagon fitting of supply line (9). Connect to 90° inlet (12) on backside of Bonzai body. **DO NOT OVERTIGHTEN.**
 5. Slide mounts (13) over their male counterparts. [Figure A]
NOTE: Do not remove the tape backing on mounts at this time!
 6. Hold Bonzai up to the wall and determine mounting location. Evaluate showerhead and body jet heights, making certain supply line (9) reaches nipple (1).
 7. Use a level to check for vertical (plumb) position.
 8. Mark the wall at top & bottom mounts (13) for reference.
 9. Reposition mounts (13) to marks on wall. Mark the hole in the center of each mount.
 10. For solid surface walls (tile, marble, granite, etc.) use a masonry/tile bit and drill a ¼" hole at the center mark for each mount that is 1½" deep. **BEWARE—Live Plumbing In Wall!**
 11. Insert the nylon anchors (16) into the holes. [Figure B]
 12. Remove tape backing from mounts (13) and reposition to marks on wall. [Figure B]
 13. Secure mounts (13) to wall with mounting screws (14) and metal washers (15). **DO NOT OVERTIGHTEN.** [Figure B]
 14. Remove tape backing on escutcheon base (6), slide over nipple (1) and attach to wall. [Figure C]
NOTE: Optional thin escutcheon (8) is for installations where the ABS escutcheon (6,7) interferes with desired mounting height of Bonzai. For best look with thin escutcheon (8), nipple should not extend more than ¾" from wall surface.
 15. Secure chrome 90° w/ cone washer (3) to nipple (2). **DO NOT OVERTIGHTEN.** [Figure C]
NOTE: Cone washer is already installed on chrome 90° (3).
 16. Insert Bonzai into wall mounts.
 17. Determine length of supply line (9). Supply line must install completely over barbed portion of 90° connector (3). To shorten, remove Bonzai from wall, cut supply line with sharp utility knife and re-insert Bonzai into wall mounts.
 17. Secure Bonzai to wall mounts (13) with screws (17). Choose the holes that set the Bonzai at your desired distance from the wall. [Figure D]
 18. Insert cover plates (18) into side of mounts (13). [Figure D]
 19. Slide chrome finned nut (5), then tapered plastic washer (4) over supply line (9). Refer to Figure E for proper positioning.
 20. Push hose onto barbed portion of chrome 90° (3). Slide tapered plastic washer (4) over barbs and secure with chrome finned nut (5). **DO NOT OVERTIGHTEN.** [Figure E]
HINT: Apply a small amount of liquid soap to help hose slide onto barbed connection.
 21. Push escutcheon cover (6) into base plate (1). [Figure E]
 22. Secure hand shower holder (20) to Bonzai with screws (17).
 23. Insert 4mm rubber washer (22) into each end of hand shower hose (21). Secure to Bonzai and hand shower (19).
 24. Insert 6mm rubber washer (24) into showerhead (23) and securely tighten to Bonzai. **DO NOT OVERTIGHTEN.**
 25. Carefully insert shelf (25) into mounting bracket until tabs lock in place. Secure shelf to Bonzai with screw (17).

Congratulations! You are now ready to enjoy your new PULSE ShowerSpas Bonzai Rain Shower System!

Usage

The arched shower arm pivots from side to side.

Turn diverter either direction to change functions or set between functions for further enjoyment.

Turn face of hand shower to switch settings.

Adjust the hand shower position by loosening the knob on the hanger and rotating forward or back.

Always turn cold water on first to help prevent any accidental burning or scalding; especially for children and elderly.

The Bonzai is equipped with Spray Straight™ technology in the tips of the showerhead and hand shower. If the stream becomes obstructed from mineral deposits, simply rub the soft tips with your finger to loosen the deposits.

To remove debris from the flow restrictor, unscrew the supply line from the backside of Bonzai. Take out the screened washer and restrictor from inside the nut. Use a toothpick or rinse with water to remove debris.

Care and Maintenance

To keep your ShowerSpa looking new, wipe down after each use with a soft cotton cloth.

Protect your ShowerSpa from hard water stains and mineral deposits by periodically using an auto spray wax.

Clean using mild liquid soap and a non-abrasive sponge or cloth. Rinse with clean water.

If the flow rate of your ShowerSpa is less than expected, reduces over time or functions are not completely independent, the actuator can be removed to clean sediment. Please refer to the instructions on page 3 or Call Tech Support at 1-888-785-7320 and we will be happy to assist you.

***Do Not Use Any Kind Of
Chemicals Or Abrasives!***

Manufacturer's Limited Warranty

PULSE Shower Spas, Inc. warrants that all ShowerSpas are free from defect in workmanship and/or materials for a period of three years from the date of purchase. This warranty extends to the original purchaser only and is non-transferable.

This warranty does not cover, and PULSE ShowerSpas will not pay for conditions, malfunctions or damages resulting from (1) normal wear and tear, improper installation (whether performed by a contractor, service company or the consumer), improper maintenance, misuse, abuse, negligence, accident or alteration; (2) the use of abrasive, caustic or "no-rinse" cleaning agents; (3) the use of the product in any manner contrary to the product instruction; (4) conditions in the home such as excessive water pressure or corrosion.

Should any ShowerSpa be determined by PULSE ShowerSpas, Inc. to be defective in normal residential use, at the option of PULSE ShowerSpas, Inc., such product shall either be replaced or repaired and returned to the customer free of defects. The consumer shall give notice of any defects to PULSE ShowerSpas, Inc. within thirty days of discovery of such defect.

Proof of purchase (original sales receipt) must be provided to PULSE Shower Spas, Inc. with all warranty claims. PULSE Shower Spas, Inc. is not responsible for labor charges, removal charges, installation or other consequential costs. In no event shall the liability of PULSE ShowerSpas, Inc. exceed the purchase price of the ShowerSpa.

Some states/provinces do not allow limitations of how long an implied warranty lasts or the exclusion or limitation of such damages, so these limitations and exclusions may not apply to you. This warranty gives the consumer specific legal rights. You may also have other rights that vary by state/province.

Follow manufacturers recommended installation. Use caution with children under ten years of age. Do not use your ShowerSpa as a support device. Do not use harsh chemicals or abrasives when cleaning. Always turn water supply off when servicing your ShowerSpa.

PULSE

SHOWERSPAS

PULSE ShowerSpas, Inc. ~ 49 Hangar Way Suite A ~ Watsonville, CA 95076 ~ 888.785.7320
info@pulseshower spas.com ~ www.pulseshower spas.com ~ support@pulseshower spas.com